

GLÖTZL Baumeßtechnik

WEIRBOX for LEAKAGE WATER MEASUREMENT

Type: GWK 552

Art. No.: 88.01

The weirbox for leakage water is used for measurement of free floating water volumes in the dimension of 0.0001 – 2.0 l/s (12 l/s).

Figure:

Weirbox, consisting of:

- Inflow reservoir
- Outflow reservoir with measuring orifice
- Measuring reservoir with water level indication
- Cleaning flap

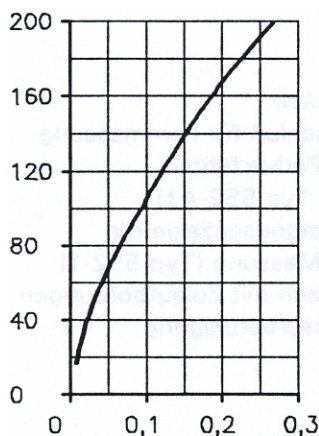


Two measuring orifices are available for measurement of water volumes. The level of dammed-up water – dependent on inflowing water volume – is read in mm at the water level indicator and the flow rate is determined by a calibration table.

With the water level measuring device GWS A 250 a remote control can be done up to 150 m distance by means of the pearl procedure or a registration of the measured value with an automatic measuring device.

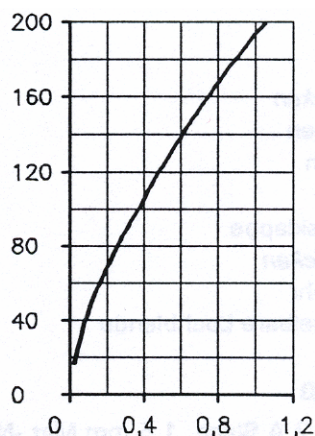
Determination of the water volume by a calibration table

Orifice A 0.001-0.25 l/s



Flow rate l/s

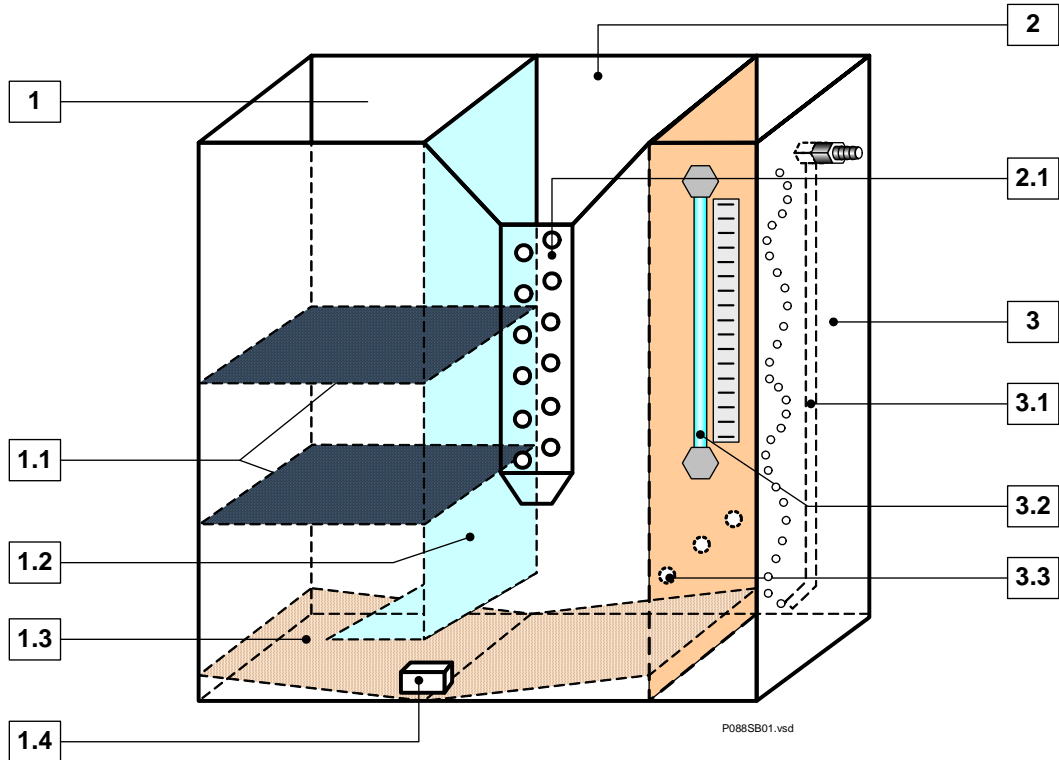
Orifice B 0.02-1.00 l/s



Flow rate l/s

Function:

The water is entering the inlet reservoir 1 and is calmed by the orifices 1.1 as well as by the separating plate 1.2. The outflow is done by the orifice 2.2, whereby a water level is built in the outflow reservoir 2. This level is transferred to the measuring basin by means of the opening 3.3 and calmed. The measured water level in the measuring basin is registered in the calibration table where the searched water volume can be read in l/sec.



Models:

- | | | |
|----|-----------------|---|
| 1) | Type GWK 552-A1 | Remote control and automatic registration by means of pearl procedure at connection 3.1 |
| 2) | Type GWK 552-1 | Direct measurement from water level indication 3.2 |

Orifices:

- | | | |
|----|---------------------|---|
| A. | 0.001 – 0.25 l/sec. | |
| B. | 0.02 – 1.00 l/sec. | Resolution over 200 mm measuring distance |
| C. | 0.2 – 2.00 l/sec. | Further measuring ranges on request |
| D. | 0.2 – 12.00 l/sec. | |

Description:

- | | | | |
|-----|--------------------------|-----|--|
| 1. | Inlet reservoir | 3. | Inlet reservoir |
| 1.1 | Orifices | 3.1 | Measuring connection for remote control by means of pearl procedure (only for type 552-A1) |
| 1.2 | Separating plate | 3.2 | Water level indication for direct measurement (type 552-1) |
| 1.3 | Metal guide | 3.3 | Separating plate with intake borings for water calming |
| 1.4 | Cleaning flap | | |
| 2 | Outflow reservoir | | |
| 2.1 | Interchangeable orifices | | |

Technical Data:

Material: V2A sheet, 1.5 mm mat. No.: 1.4571
 Dimensions: Length 500 mm, height 500 mm, depth 200 mm
 Weight: 15 kgs
 For orifice D (dependent on location) a special model of box is required.

Subject to technical alternations

GLÖTZL Gesellschaft für Baumeßtechnik mbH · Forlenweg 11 · 76287 Rheinstetten · Germany
 ☎ +49 (0)721 51 66 - 0 · 📠 +49 (0)721 51 66 - 30 · 🌐 <http://www.gloetzl.com> · 📧 info@gloetzl.com